

Feed check valve

Type FCV

Description

This unit comprises two valves, a stop valve and a check valve. An important feature of the design is the accessibility of the check valve which can be examined, by removing the inlet straight bottom part.



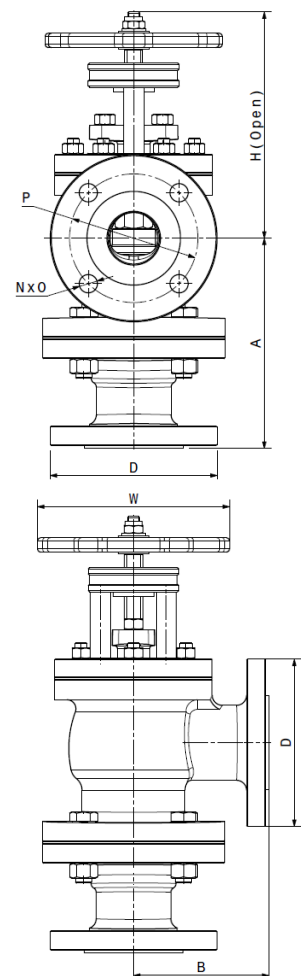
Applications

Feed Check Valve is one of the most important components of boiler which controls the flow of water from feed pump to the boiler and further prevents the backflow of water from boiler to pump when the boiler pressure is more than the pump pressure or when feed pump stops working.

Size and Pipe Connections

Dimensions (approx.) in mm

Body material	Dimensions and Standard of Flange									
	BS 10 Table F (Inlet and outlet)									
	Size	D	N	O	P	A	B	W	H	
Bronze	1" DN25	121	4	18	87.5	186	82	100	230	
Cast iron	1 1/2" DN40	140	4	18	105	189	128	190	315	
	2" DN50	165	4	18	127	206	132	190	330	
	3" DN80	203	8	18	165	267	154	240	415	
Cast steel	BS 10 Table H (Inlet and outlet)									
	1 1/2" DN40	140	4	18	105	193	128	190	315	
	2" DN50	165	4	18	127	212	138	190	330	
	3" DN80	203	8	18	165	274	160	240	415	



Inlet and Outlet flange

N = No. of holes

O = Dia. of holes

P = Pitch circle dia.

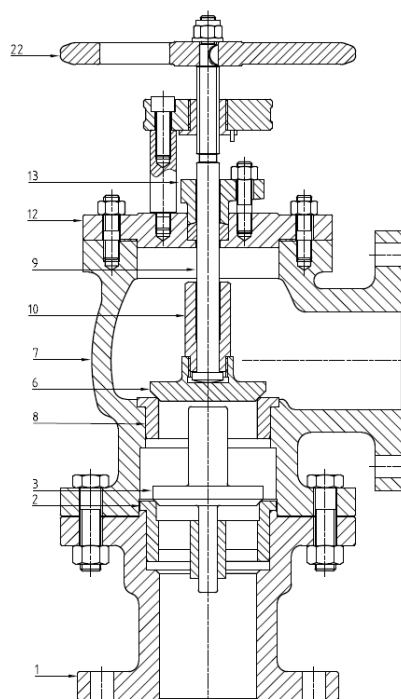
Limiting conditions

Pressure / temperature rating

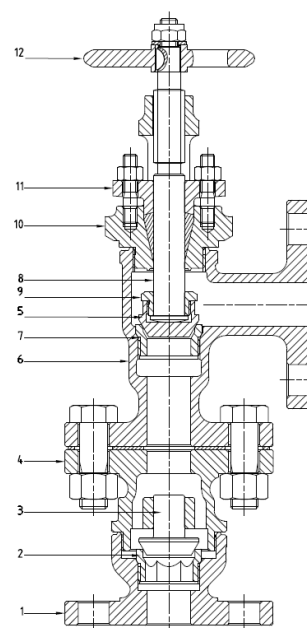
Body material	Bronze	Cast iron	Cast steel
Temperature (°C)	220	210	200
Max. Working pressure (bar)	10	11	20

Materials

Item	Part Name	Body material		
		Bronze	Cast iron	Cast steel
1	Check valve body	Bronze	Cast iron	Cast steel
2	Check valve seat ring	Stainless steel	Nickel alloy	Nickel alloy
3	Check valve Disc	Stainless steel	Stainless steel	Stainless steel
4	Check valve bonnet	Bronze	-	-
5	Feed valve Disc	Stainless steel	Stainless steel	Stainless steel
6	Feed valve body	Bronze	Cast iron	Cast steel
7	Feed valve seat ring	Stainless steel	Stainless steel	Stainless steel
8	Stem	Brass	Stainless steel	Stainless steel
9	Disc nut	Brass	Brass	Brass
10	Feed valve bonnet	Bronze	ST 52	ST 52
11	Gland flange	Bronze	Bronze	Bronze
12	Hand wheel	Cast iron	Cast iron	Cast iron



Size (DN40, DN50, DN80)



Size (DN25)