

Parallel Slide Blowdown Valve Link type for small boilers

Type BVA

Description

This valve is an adaptation parallel slide valve which is designed to ensure ease of operation and tight closure. The valve being suitable for flow in either direction. The valve opens with less than a quartet turn of the box-key. A lever type box-key is supplied with each valve.



Applications

In boilers, blowdown valves removes both suspended solids and sludge from the surface and bottom respectively.

Size and Pipe Connections

Dimensions (approx.) in mm

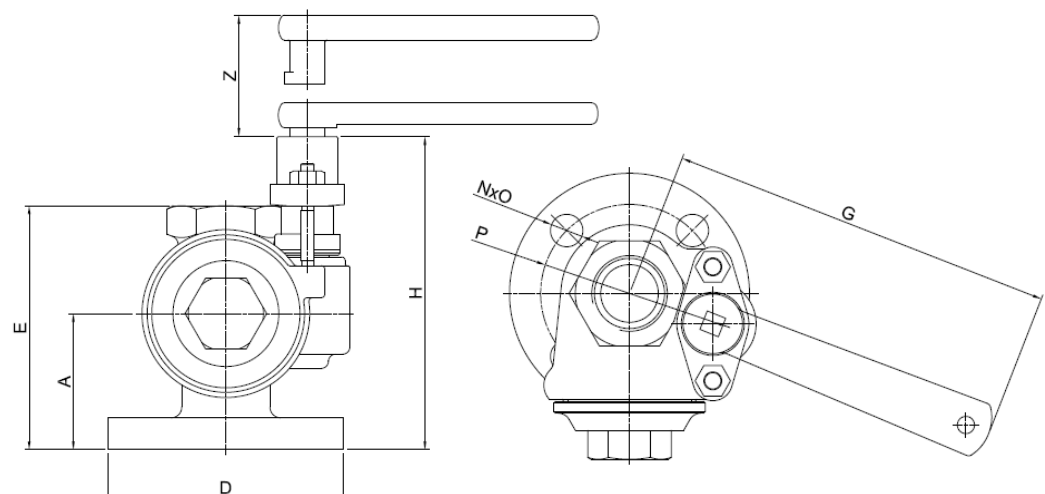
Size	Valve Dimensions and Flange Standard										
	Connections		D	N	O	P	G	H	Z	A	E
	Inlet Flange (BS 10 Table F)	Outlet Thread (Female)									
DN25	1"	G 1"	121	4	18	87.5	170	170	30	74.5	125.5
DN32	1 ¼"	G 1 ¼"	133	4	18	98.5	220	190	35	77	138
DN40	1 ½"	G 1 ½"	140	4	18	105	220	190	35	77	138

Inlet flange

N = No. of holes

O = Dia. Of holes

P = Pitch circle dia.

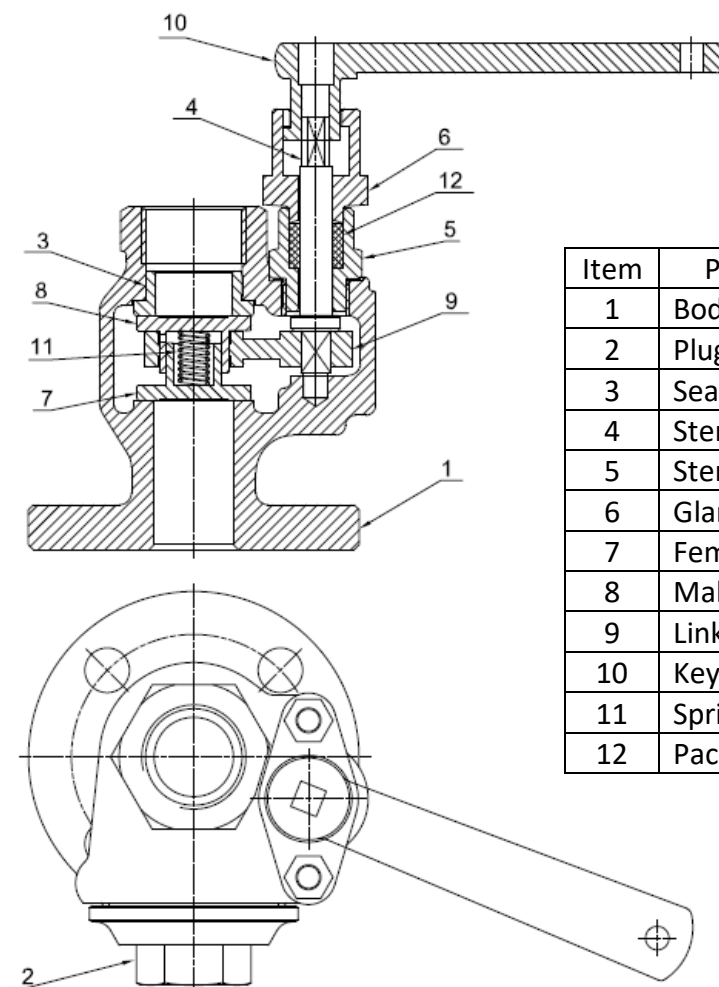


Limiting conditions

Pressure / temperature rating

Temperature (°C)	210
Max. Working pressure (bar)	12

Materials



Item	Part name	Material
1	Body	Bronze
2	Plug	Bronze
3	Seat	Nickel alloy
4	Stem	Stainless steel
5	Stem Bushing	Brass
6	Gland bushing	Bronze
7	Female disk	Nickel alloy
8	Male disk	Nickel alloy
9	Linkage	Bronze
10	Key	Cast steel
11	Spring	Stainless steel
12	Packing	PTFE

Key Operated Boiler Blowdown Valve

Type BV 20

Description

The key operated boiler blowdown valve consists of a carbon steel ball valve with reinforced PTFE seats and a key operated mechanism in stainless steel. The key cannot be removed when the valve is open, to ensure compliance with boiler regulations. This valve is available in automatic and manual versions.



Applications

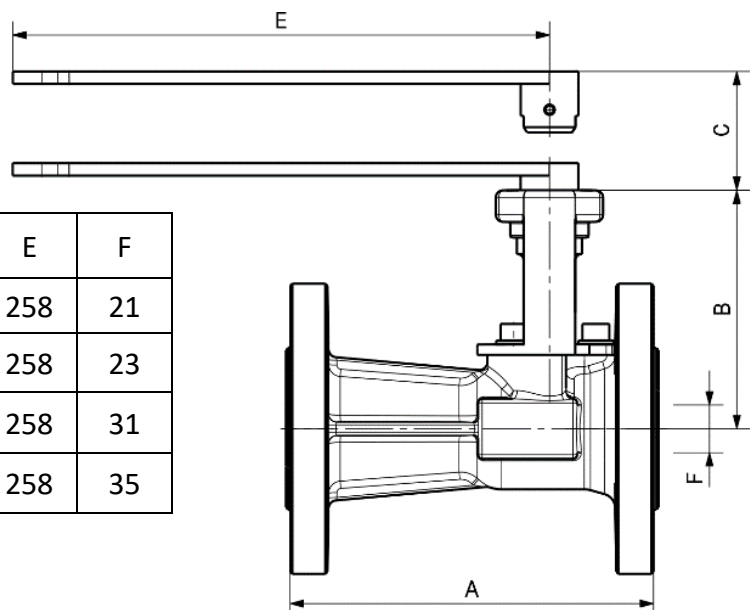
The valve is specifically designed for boiler blowdown applications. The BV 20 is designed for the removal of suspended/deposited solids and water from the bottom of steam boilers.

Size and Pipe Connections

Flange standard (BS EN 1092, PN40)

Dimensions (approx.) in mm

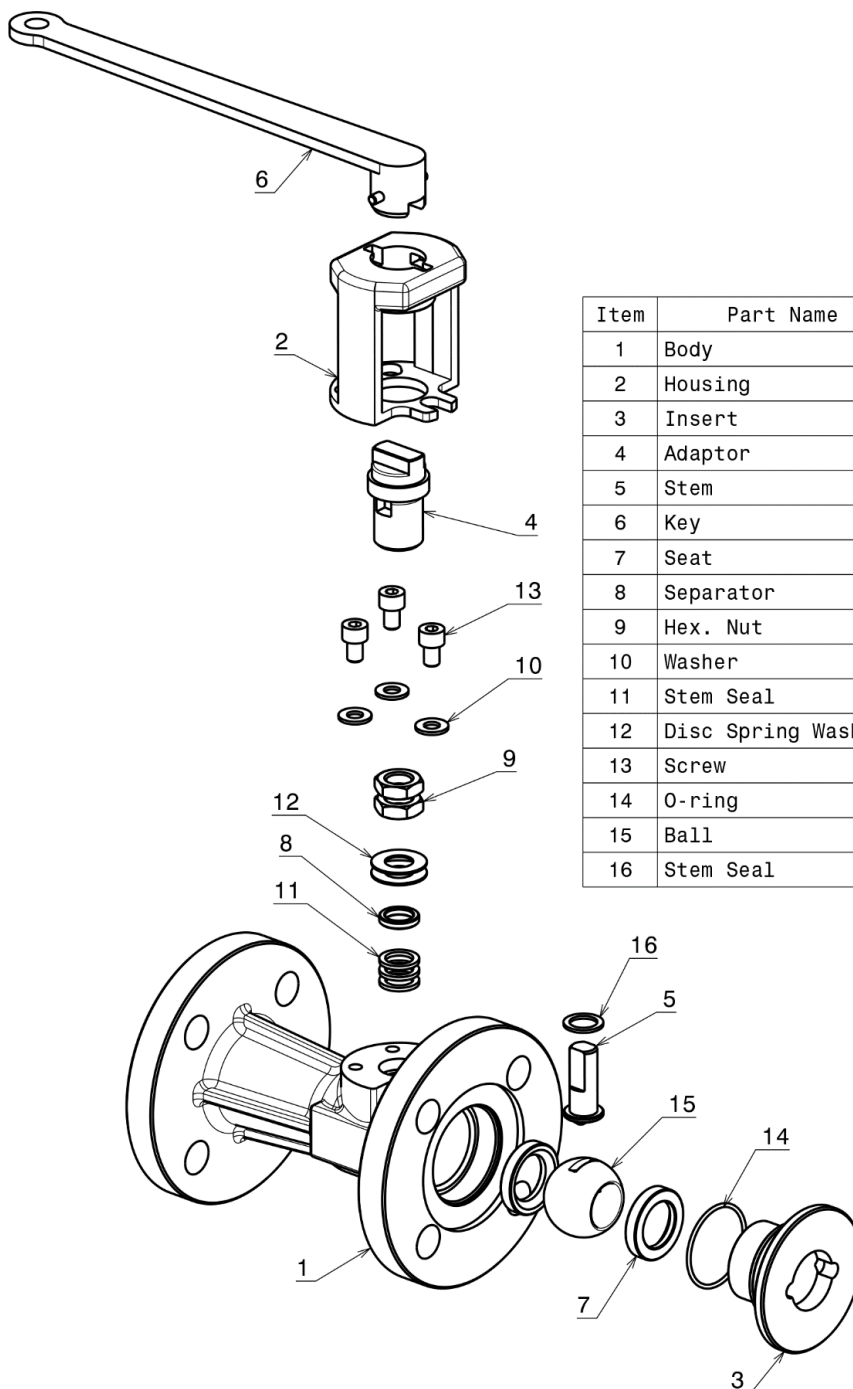
Size	A	B	C	E	F
1" DN25	165	114	35	258	21
1 ¼" DN32	178	117	35	258	23
1 ½" DN40	190	126	35	258	31
2" DN50	216	134	35	258	35



Limiting Conditions

Max. allowable pressure	17.25 bar g at 208°C
Cold hydraulic test pressure	60 bar g
Seat leakage test	6 bar g (air under water)

Material



Item	Part Name	Material	QTY.
1	Body	ASTM A216 WCB	1
2	Housing	Stainless Steel	1
3	Insert	Alloy Steel	1
4	Adaptor	Stainless Steel	1
5	Stem	Stainless Steel	1
6	Key	Stainless Steel	1
7	Seat	PTFE	2
8	Separator	Stainless Steel	1
9	Hex. Nut	Steel	2
10	Washer	Steel	3
11	Stem Seal	PTFE	3
12	Disc Spring Washer	Stainless Steel	2
13	Screw	Steel	3
14	O-ring	Viton	1
15	Ball	Stainless Steel	1
16	Stem Seal	PTFE	1